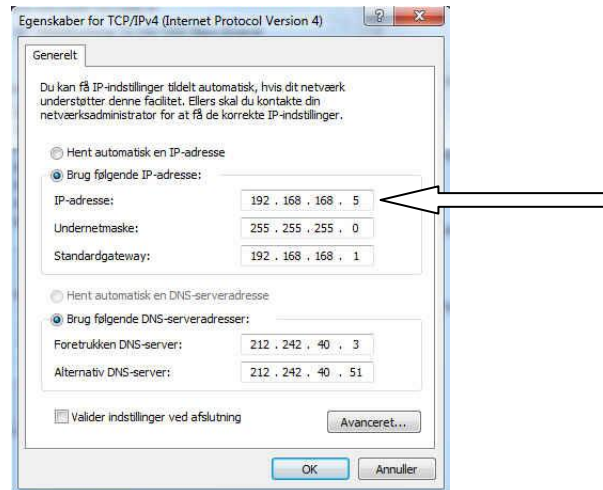


UNC-500 – konfiguration af TCP/IP

Ved konfiguration af IP-adresse på en UNC-500, skal du anvende Telnet. Det er muligt, at du først skal aktivere Telnet via Kontrolpanelet.

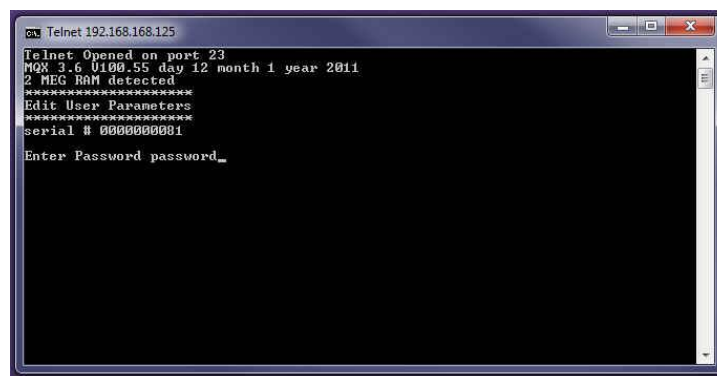
1. Start med at ændre egenskaberne for dine TCP/IP-indstillinger.



2. Sæt alle DIP-switches til OFF på UNC-500.
3. Start dit CMD-vindue og skriv "Telnet 192.168.168.125".

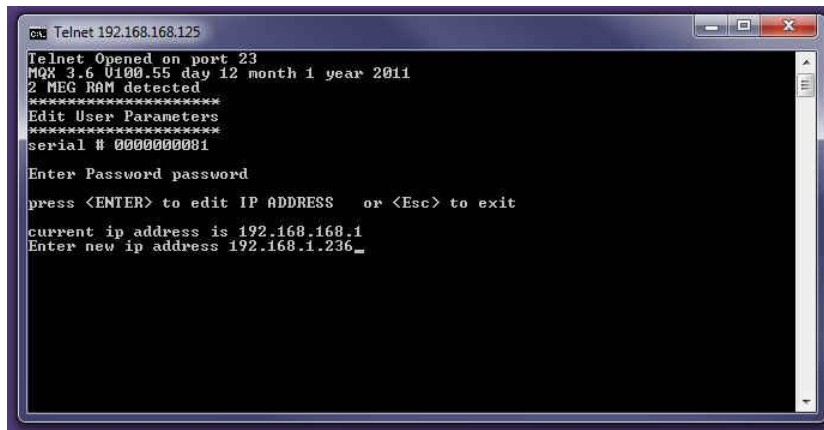


4. Standard-password er "password".



UNC-500 – konfiguration af TCP/IP

- Tryk Enter for at ændre IP-adresse. Indtast IP-adresse og klik Enter.

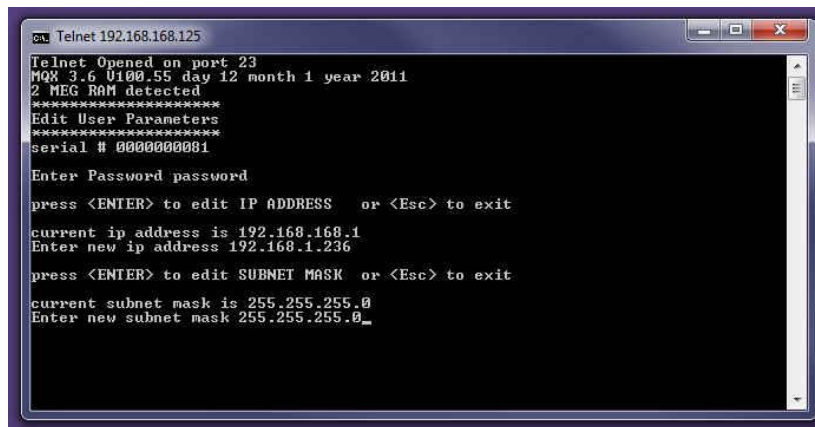


```
ca Telnet 192.168.168.125
Telnet Opened on port 23
MQX 3.6 U100.55 day 12 month 1 year 2011
2 MEG RAM detected
*****
Edit User Parameters
*****
serial # 000000001

Enter Password password

press <ENTER> to edit IP ADDRESS or <Esc> to exit
current ip address is 192.168.168.1
Enter new ip address 192.168.1.236_
```

- Klik Enter for at ændre Subnetmaske. Indtast Subnetmaske og klik Enter.



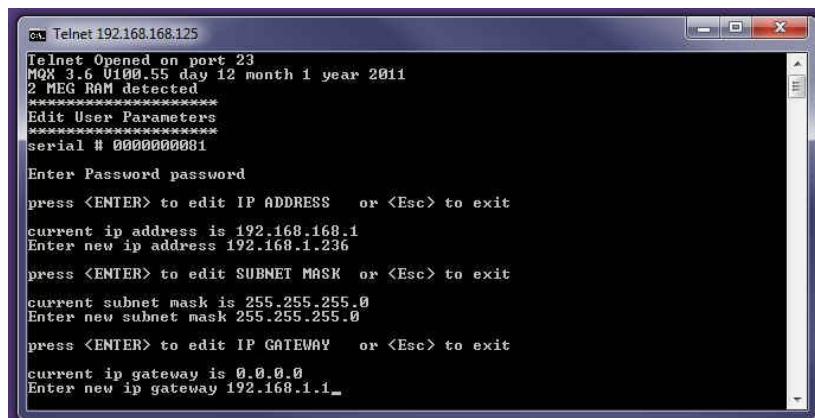
```
ca Telnet 192.168.168.125
Telnet Opened on port 23
MQX 3.6 U100.55 day 12 month 1 year 2011
2 MEG RAM detected
*****
Edit User Parameters
*****
serial # 000000001

Enter Password password

press <ENTER> to edit IP ADDRESS or <Esc> to exit
current ip address is 192.168.168.1
Enter new ip address 192.168.1.236

press <ENTER> to edit SUBNET MASK or <Esc> to exit
current subnet mask is 255.255.255.0
Enter new subnet mask 255.255.255.0_
```

- Klik Enter for at ændre Gateway. Indtast Gateway og klik på Enter.



```
ca Telnet 192.168.168.125
Telnet Opened on port 23
MQX 3.6 U100.55 day 12 month 1 year 2011
2 MEG RAM detected
*****
Edit User Parameters
*****
serial # 000000001

Enter Password password

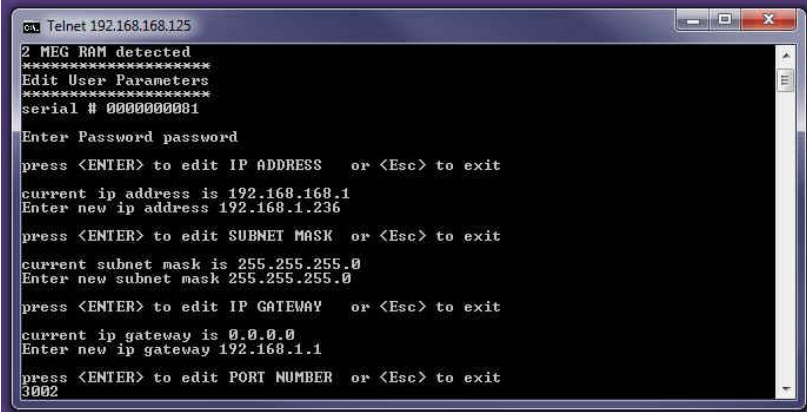
press <ENTER> to edit IP ADDRESS or <Esc> to exit
current ip address is 192.168.168.1
Enter new ip address 192.168.1.236

press <ENTER> to edit SUBNET MASK or <Esc> to exit
current subnet mask is 255.255.255.0
Enter new subnet mask 255.255.255.0

press <ENTER> to edit IP GATEWAY or <Esc> to exit
current ip gateway is 0.0.0.0
Enter new ip gateway 192.168.1.1_
```

UNC-500 – konfiguration af TCP/IP

- Klik Enter for at ændre portnummer. Indtast portnummer (f.eks. 3002) og klik på Enter.



```
ca Telnet 192.168.168.125
2 MEG RAM detected
*****
Edit User Parameters
*****
serial # 0000000001

Enter Password password

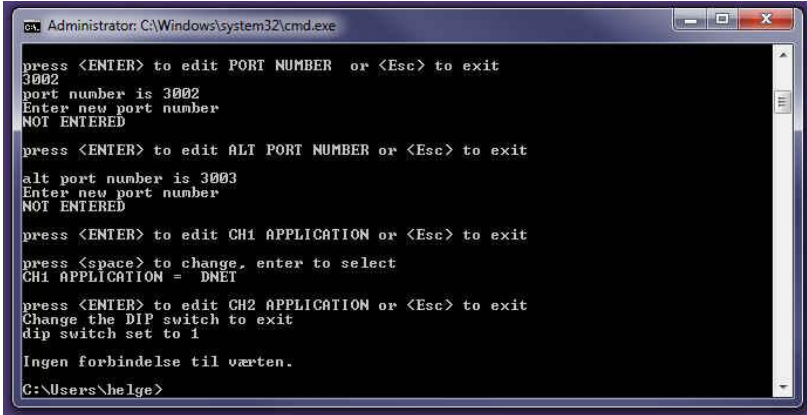
press <ENTER> to edit IP ADDRESS or <Esc> to exit
current ip address is 192.168.168.1
Enter new ip address 192.168.1.236

press <ENTER> to edit SUBNET MASK or <Esc> to exit
current subnet mask is 255.255.255.0
Enter new subnet mask 255.255.255.0

press <ENTER> to edit IP GATEWAY or <Esc> to exit
current ip gateway is 0.0.0.0
Enter new ip gateway 192.168.1.1

press <ENTER> to edit PORT NUMBER or <Esc> to exit
3002
```

- "alt port number" anvendes ikke.
- På 200-serien står CH1 til "DNET".
- På 400-serien står CH2 som standard til DNET og CH3 som NCNET.
- Din konfiguration er nu færdig. Afslut med at sætte DIP-switch 1, 6 og 7 til ON, hvis det er den første UNC-500 i netværket. Sæt 2 ON for adresse 2 o.s.v.



```
Administrator: C:\Windows\system32\cmd.exe

press <ENTER> to edit PORT NUMBER or <Esc> to exit
3002
port number is 3002
Enter new port number
NOT ENTERED

press <ENTER> to edit ALT PORT NUMBER or <Esc> to exit
alt port number is 3003
Enter new port number
NOT ENTERED

press <ENTER> to edit CH1 APPLICATION or <Esc> to exit
press <space> to change, enter to select
CH1 APPLICATION = DNET

press <ENTER> to edit CH2 APPLICATION or <Esc> to exit
Change the DIP switch to exit
dip switch set to 1

Ingen forbindelse til værten.
C:\Users\helge>
```

- Husk at sætte egenskaberne for dine TCP/IP-indstillinger tilbage. Afslut med at prøve at PINGE den ny IP-adresse.
- Opret nu det ny netværk, en NC-100 og en RC-2 i din AxiomV-software.

BEMÆRK!

Hvis du senere ønsker at ændre parametre, kræver det at du sætter alle DIP-switcher til OFF og via Telnet kontakter 192.168.168.125.